
AMSD1-2-F In Hot Sale low voltage 2 way 120/240v 0.8-1.2mm thickness main distribution board load center



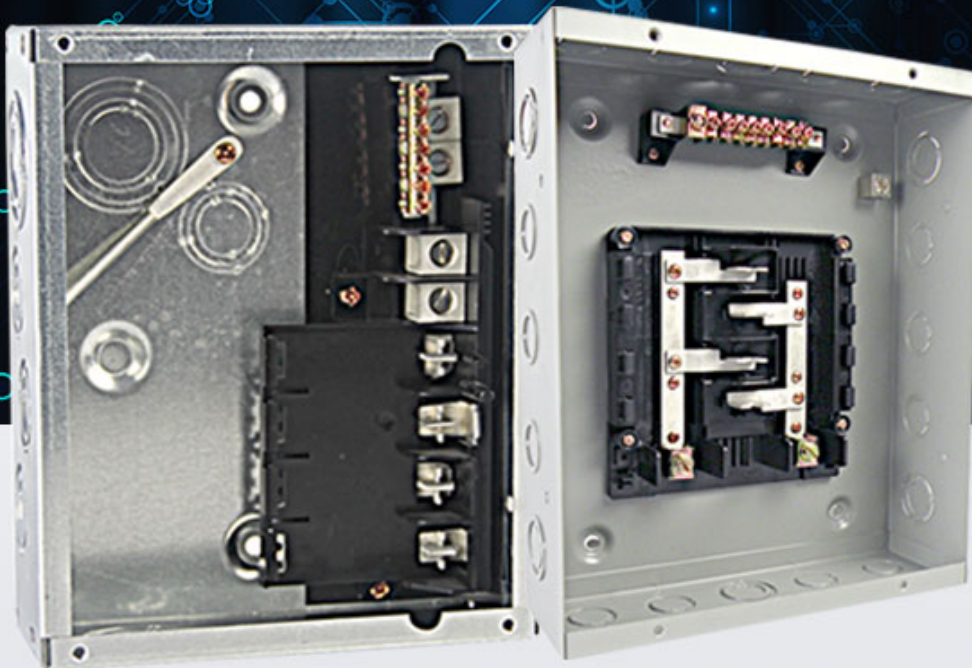
LOAD CENTER

PROFESSIONAL MANUFACTURE

Durable quality

Free samples

Best service



| | |
|---------------|--|
| Specification | Rated Voltage:120/240V Material:Steel sheet of up to 0.8-1.2 thickness,2way,Flush type |
| MOQ | 200pcs |
| Price | Depend on steel sheet thickness and inner part materials |

PRODUCT DETAIL

ADVANTAGES MATERIAL

FLUSH AND SURFACE
MOUNTED DESIGN

CHIEF WILL CONTINUE TO TAKE CARE TO VALUE FOR CUSTOMERS, ADD DEVELOPMENT FOR EMPLOYEES, MAKE CONTRIBUTION FOR SOCIETY AS CORPORATE PHILOSOPHY TO BETTER LONG TERM AND STABLE COOPERATION WITH CUSTOMERS.
TO BETTER LONG TERM AND STABLE COOPERATION WITH CUSTOMERS.



VALUE SERVICE

Durable quality /
Free samples /
Best service /

CHIEF WILL CONTINUE TO TAKE CARE TO VALUE FOR CUSTOMERS, ADD DEVELOPMENT FOR EMPLOYEES, MAKE CONTRIBUTION FOR SOCIETY AS CORPORATE PHILOSOPHY TO BETTER LONG TERM AND STABLE COOPERATION WITH CUSTOMERS.
TO BETTER LONG TERM AND STABLE COOPERATION WITH CUSTOMERS.

QUALITY ASSURANCE

Test report and certification
can be provided

CHIEF WILL CONTINUE TO TAKE CARE TO VALUE FOR CUSTOMERS, ADD DEVELOPMENT FOR EMPLOYEES, MAKE CONTRIBUTION FOR SOCIETY AS CORPORATE PHILOSOPHY TO BETTER LONG TERM AND STABLE COOPERATION WITH CUSTOMERS.
TO BETTER LONG TERM AND STABLE COOPERATION WITH CUSTOMERS.





Product

link :

<https://www.amervolt.com/mts1-2-f-in-hot-sale-low-voltage-2-way-120240v-0-8-1-2mm-thickness-main-distribution-board-load-center.html>