
AMSD1-1-F Factory Directly Sale high quality flush type plug in economy residential load center distribution board



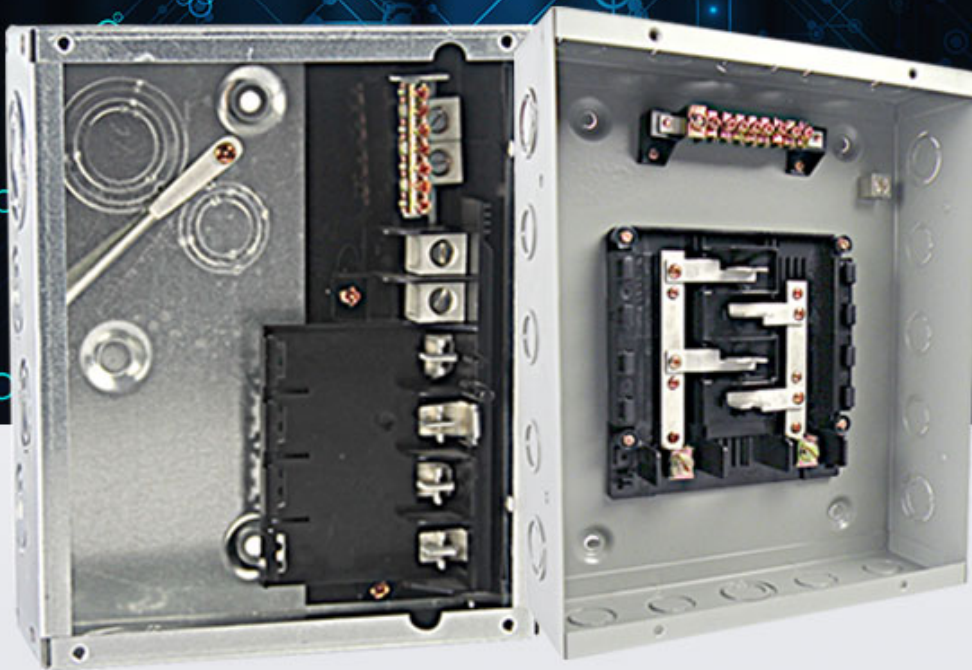
LOAD CENTER

PROFESSIONAL MANUFACTURE

Durable quality

Free samples

Best service



Specification	Rated Voltage:120/240V Material:Steel sheet of up to 0.8-1.2 thickness,1way,Flush type
MOQ	200pcs
Price	Depend on steel sheet thickness and inner part materials

PRODUCT DETAIL

ADVANTAGES MATERIAL

FLUSH AND SURFACE
MOUNTED DESIGN

CHSEF WILL CONTINUE TO TAKE "ORIENT VALUE FOR CUSTOMERS, 200% DEVELOPMENT FOR EMPLOYEES, 50% CONTRIBUTION FOR SOCIETY" AS CORPORATE PHILOSOPHY TO ESTABLISH LONG-TERM AND STABLE COOPERATION WITH CUSTOMERS.
TO ESTABLISH LONG-TERM AND STABLE COOPERATION WITH CUSTOMERS.



VALUE SERVICE

Durable quality /
Free samples /
Best service /

CHSEF WILL CONTINUE TO TAKE "ORIENT VALUE FOR CUSTOMERS, 200% DEVELOPMENT FOR EMPLOYEES, 50% CONTRIBUTION FOR SOCIETY" AS CORPORATE PHILOSOPHY TO ESTABLISH LONG-TERM AND STABLE COOPERATION WITH CUSTOMERS.
TO ESTABLISH LONG-TERM AND STABLE COOPERATION WITH CUSTOMERS.

QUALITY ASSURANCE

Test report and certification
can be provided

CHSEF WILL CONTINUE TO TAKE "ORIENT VALUE FOR CUSTOMERS, 200% DEVELOPMENT FOR EMPLOYEES, 50% CONTRIBUTION FOR SOCIETY" AS CORPORATE PHILOSOPHY TO ESTABLISH LONG-TERM AND STABLE COOPERATION WITH CUSTOMERS.
TO ESTABLISH LONG-TERM AND STABLE COOPERATION WITH CUSTOMERS.





Product

link :

<https://www.amervolt.com/mtsd1-1-f-factory-directly-sale-high-quality-flush-type-plug-in-economy-residential-load-center-distribution-board.html>