

---

# AML612F New product superior low voltage main distribution board 6way 125a plug- in type electrical load center



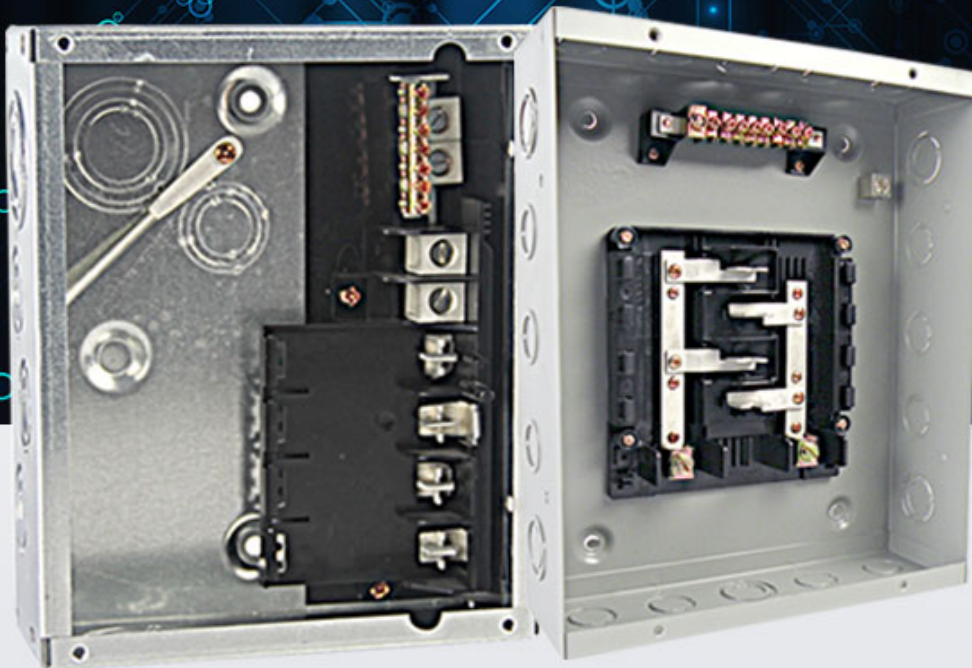
# LOAD CENTER

PROFESSIONAL MANUFACTURE

Durable quality

Free samples

Best service



## PRODUCT PARAMETERS

Specification	Rated Voltage:120/240V Material:Steel sheet of up to 0.8-1.2 thickness,6way,Flush type
MOQ	200pcs
Price	Depend on steel sheet thickness and inner part materials

---

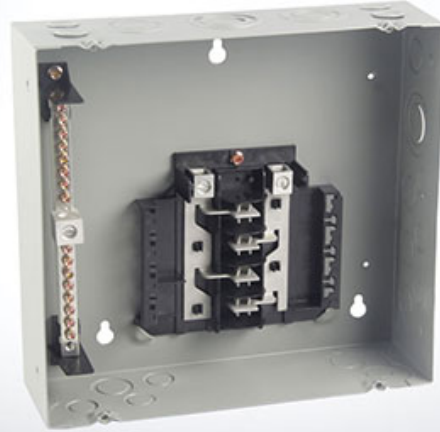
---

# PRODUCT DETAIL

## ADVANTAGES MATERIAL

FLUSH AND SURFACE  
MOUNTED DESIGN

CHSEF WILL CONTINUE TO TAKE "ORIENT VALUE FOR CUSTOMER, 200% DEVELOPMENT FOR EMPLOYEE, 50% CONTRIBUTION FOR SOCIETY" AS CORPORATE PHILOSOPHY TO ESTABLISH LONG-TERM AND STABLE COOPERATION WITH CUSTOMERS.  
TO ESTABLISH LONG-TERM AND STABLE COOPERATION WITH CUSTOMERS.



## VALUE SERVICE

Durable quality /  
Free samples /  
Best service /

CHSEF WILL CONTINUE TO TAKE "ORIENT VALUE FOR CUSTOMER, 200% DEVELOPMENT FOR EMPLOYEE, 50% CONTRIBUTION FOR SOCIETY" AS CORPORATE PHILOSOPHY TO ESTABLISH LONG-TERM AND STABLE COOPERATION WITH CUSTOMERS.  
TO ESTABLISH LONG-TERM AND STABLE COOPERATION WITH CUSTOMERS.

## QUALITY ASSURANCE

Test report and certification  
can be provided

CHSEF WILL CONTINUE TO TAKE "ORIENT VALUE FOR CUSTOMER, 200% DEVELOPMENT FOR EMPLOYEE, 50% CONTRIBUTION FOR SOCIETY" AS CORPORATE PHILOSOPHY TO ESTABLISH LONG-TERM AND STABLE COOPERATION WITH CUSTOMERS.  
TO ESTABLISH LONG-TERM AND STABLE COOPERATION WITH CUSTOMERS.





# PACKING



TRADE ASSURANCE  
A FREE PAYMENT PROTECTION SERVICE

- 100%** PRODUCT QUALITY PROTECTION
- 100%** ON-TIME SHIPMENT PROTECTION
- 100%** PAYMENT PROTECTION



Certification of ISO9001



Certification of CE



Test Report



---

Product

link :

<https://www.amervolt.com/mtl612f-new-product-superior-low-voltage-main-distribution-board-6-way-125a-plug-in-type-electrical-load-center.html>