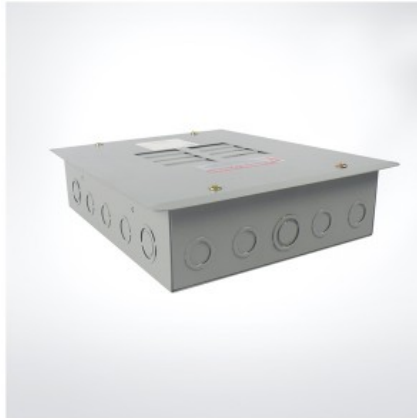

AME1-08125-F



Application:

MTE series load centers have been designed for safe, reliable distribution and control of electrical power as service entrance equipment in residential, commercial and light industrial premises.

Features:

Some of the load centers are made out of high quality Electro-Galvanized steel sheet of up to 1.2-1.5mm thickness.

Matt-Finish polyester powder coated paint.

Knockouts provided on all sides of the enclosure.

Accept plug-in circuit breakers.

Suitable for single –phase, three-wire, 120/240Vac, rated current to 125A.

Wider enclosure offers ease of wiring and more heat dissipation.

Flush and Surface mounted designs.

Knockouts for cable entry are provided on Top, Bottom of the Enclosure.

Product link : <https://www.amervolt.com/mte1-08125-f-2.html>