

---

# AME1-04125-F Wenzhou 4way flush mount type distribution panel board metal electrical panel box sizes



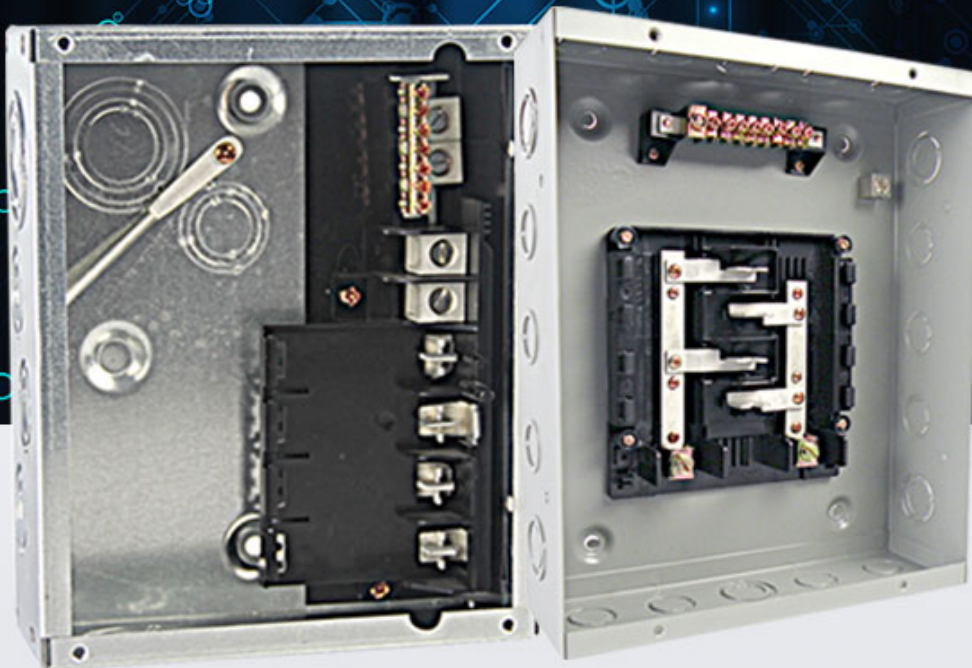
# LOAD CENTER

PROFESSIONAL MANUFACTURE

Durable quality

Free samples

Best service



Specification	Rated Voltage:120/240V Material:Steel sheet of up to 0.8-1.2 thickness,4way,Flush type
MOQ	200pcs
Price	Depend on steel sheet thickness and inner part materials

# PRODUCT DETAIL

## ADVANTAGES MATERIAL

FLUSH AND SURFACE  
MOUNTED DESIGN

CHIEF WILL CONTINUE TO TAKE "ORBIT" VALUE FOR CUSTOMERS, 200% DEVELOPMENT FOR EMPLOYEES, MAKE CONTRIBUTION FOR SOCIETY AS CORPORATE PHILOSOPHY TO ESTABLISH LONG-TERM AND STABLE COOPERATION WITH CUSTOMERS.  
TO ESTABLISH LONG-TERM AND STABLE COOPERATION WITH CUSTOMERS.



## VALUE SERVICE

Durable quality /  
Free samples /  
Best service /

CHIEF WILL CONTINUE TO TAKE "ORBIT" VALUE FOR CUSTOMERS, 200% DEVELOPMENT FOR EMPLOYEES, MAKE CONTRIBUTION FOR SOCIETY AS CORPORATE PHILOSOPHY TO ESTABLISH LONG-TERM AND STABLE COOPERATION WITH CUSTOMERS.  
TO ESTABLISH LONG-TERM AND STABLE COOPERATION WITH CUSTOMERS.

## QUALITY ASSURANCE

Test report and certification  
can be provided

CHIEF WILL CONTINUE TO TAKE "ORBIT" VALUE FOR CUSTOMERS, 200% DEVELOPMENT FOR EMPLOYEES, MAKE CONTRIBUTION FOR SOCIETY AS CORPORATE PHILOSOPHY TO ESTABLISH LONG-TERM AND STABLE COOPERATION WITH CUSTOMERS.  
TO ESTABLISH LONG-TERM AND STABLE COOPERATION WITH CUSTOMERS.







Product

link :

<https://www.amervolt.com/mte1-04125-f-wenzhou-4way-flush-mount-type-distribution-panel-board-metal-electrical-panel-box-sizes.html>