
AMCH-16125-S China cheap 120/240v 16way power plug-in main circuit breaker electrical load center



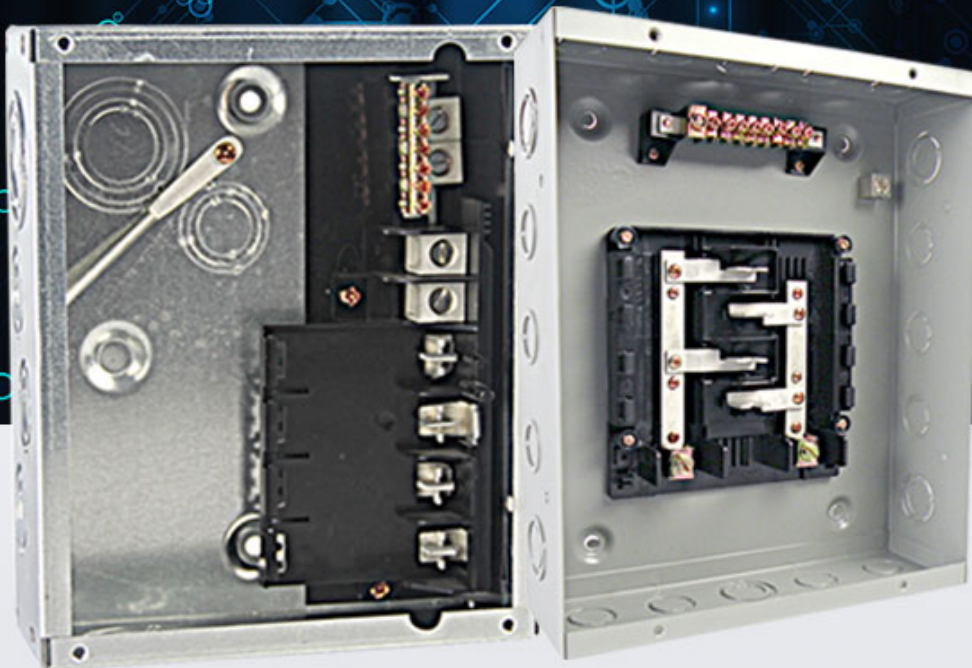
LOAD CENTER

PROFESSIONAL MANUFACTURE

Durable quality

Free samples

Best service



PRODUCT PARAMETERS

Specification	Rated Voltage:120/240V Material:Steel sheet of up to 0.8-1.2 thickness,16way,Surface type
MOQ	200pcs
Price	Depend on steel sheet thickness and inner part

	materials
--	-----------

PRODUCT DETAIL

ADVANTAGES MATERIAL

FLUSH AND SURFACE
MOUNTED DESIGN

CHIEF WILL CONTINUE TO TAKE CARE TO VALUE FOR CUSTOMERS, ASK DEVELOPMENT FOR EMPLOYEES, MAKE CONTRIBUTION FOR SOCIETY AS CORPORATE PHILOSOPHY TO BETTER LONG-TERM AND STABLE COOPERATION WITH CUSTOMERS.
TO BETTER LONG-TERM AND STABLE COOPERATION WITH CUSTOMERS.



VALUE SERVICE

Durable quality /
Free samples /
Best service /

CHIEF WILL CONTINUE TO TAKE CARE TO VALUE FOR CUSTOMERS, ASK DEVELOPMENT FOR EMPLOYEES, MAKE CONTRIBUTION FOR SOCIETY AS CORPORATE PHILOSOPHY TO BETTER LONG-TERM AND STABLE COOPERATION WITH CUSTOMERS.
TO BETTER LONG-TERM AND STABLE COOPERATION WITH CUSTOMERS.

QUALITY ASSURANCE

Test report and certification
can be provided

CHIEF WILL CONTINUE TO TAKE CARE TO VALUE FOR CUSTOMERS, ASK DEVELOPMENT FOR EMPLOYEES, MAKE CONTRIBUTION FOR SOCIETY AS CORPORATE PHILOSOPHY TO BETTER LONG-TERM AND STABLE COOPERATION WITH CUSTOMERS.
TO BETTER LONG-TERM AND STABLE COOPERATION WITH CUSTOMERS.





Product

link :

<https://www.amervolt.com/mtch-16125-s-china-cheap-120240v-16way-power-plug-in-main-circuit-breaker-electrical-load-center.html>