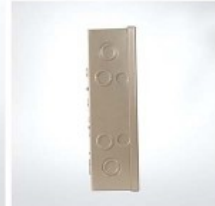
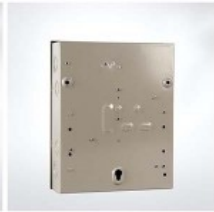


---

# AMCH-08125-S Top sell 8 way single phase wall mounted mcb distribution box enclosure



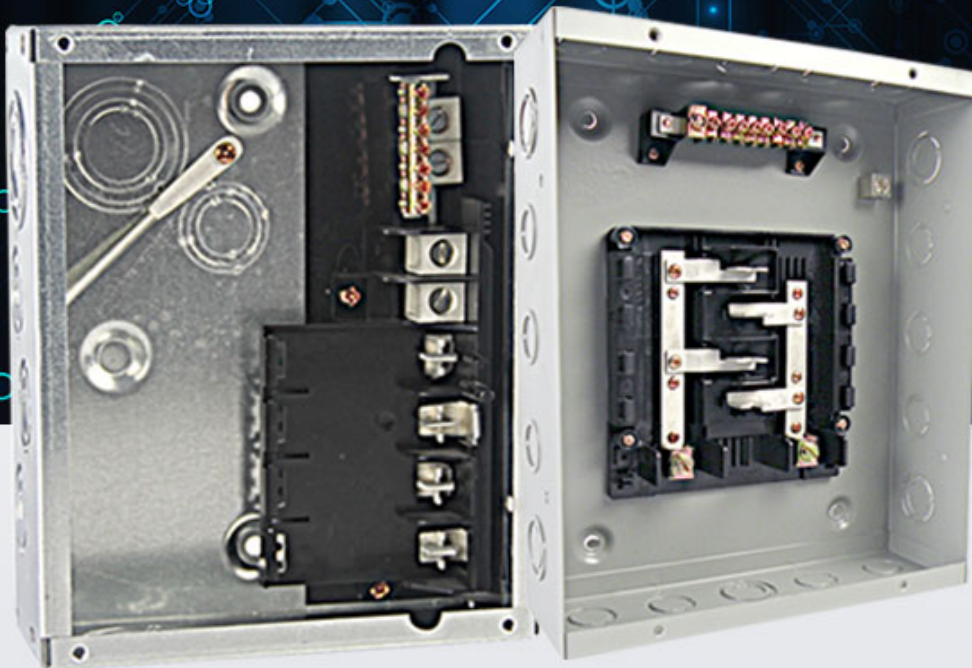
# LOAD CENTER

PROFESSIONAL MANUFACTURE

Durable quality

Free samples

Best service



## PRODUCT PARAMETERS

Specification	Rated Voltage:120/240V Material:Steel sheet of up to 0.8-1.2 thickness,8way,Surface type
MOQ	200pcs
Price	Depend on steel sheet thickness and inner part

---

	materials
--	-----------

# PRODUCT DETAIL

## ADVANTAGES MATERIAL

FLUSH AND SURFACE  
MOUNTED DESIGN

CHSEF WILL CONTINUE TO TAKE "ORIENT VALUE FOR CUSTOMER, 2000 DEVELOPMENT FOR EMPLOYEE, MAKE CONTRIBUTION FOR SOCIETY" AS CORPORATE PHILOSOPHY TO ESTABLISH LONG-TERM AND STABLE COOPERATION WITH CUSTOMERS.  
TO ESTABLISH LONG-TERM AND STABLE COOPERATION WITH CUSTOMERS.



## VALUE SERVICE

Durable quality /  
Free samples /  
Best service /

CHSEF WILL CONTINUE TO TAKE "ORIENT VALUE FOR CUSTOMER, 2000 DEVELOPMENT FOR EMPLOYEE, MAKE CONTRIBUTION FOR SOCIETY" AS CORPORATE PHILOSOPHY TO ESTABLISH LONG-TERM AND STABLE COOPERATION WITH CUSTOMERS.  
TO ESTABLISH LONG-TERM AND STABLE COOPERATION WITH CUSTOMERS.

## QUALITY ASSURANCE

Test report and certification  
can be provided

CHSEF WILL CONTINUE TO TAKE "ORIENT VALUE FOR CUSTOMER, 2000 DEVELOPMENT FOR EMPLOYEE, MAKE CONTRIBUTION FOR SOCIETY" AS CORPORATE PHILOSOPHY TO ESTABLISH LONG-TERM AND STABLE COOPERATION WITH CUSTOMERS.  
TO ESTABLISH LONG-TERM AND STABLE COOPERATION WITH CUSTOMERS.







Product

link :

<https://www.amervolt.com/mtch-08125-s-top-sell-8-way-single-phase-wall-mounted-mcb-distribution-box-enclosure.html>