
AMCH-06125-S New 6way 120/240v plug-in type squared ch electrical load center panel board



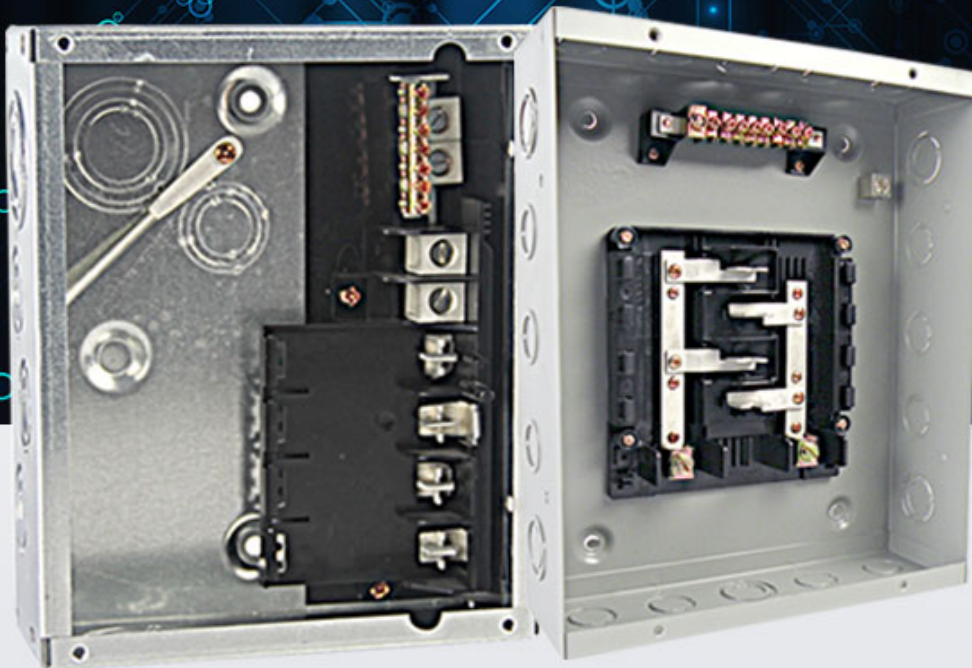
LOAD CENTER

PROFESSIONAL MANUFACTURE

Durable quality

Free samples

Best service



PRODUCT PARAMETERS

Specification	Rated Voltage:120/240V Material:Steel sheet of up to 0.8-1.2 thickness,6way,Surface type
MOQ	200pcs
Price	Depend on steel sheet thickness and inner part

	materials
--	-----------

PRODUCT DETAIL

ADVANTAGES MATERIAL

FLUSH AND SURFACE
MOUNTED DESIGN

CHSEF WILL CONTINUE TO TAKE "ORIENT VALUE FOR CUSTOMER, 200% DEVELOPMENT FOR EMPLOYEE, 50% CONTRIBUTION FOR SOCIETY" AS CORPORATE PHILOSOPHY TO ESTABLISH LONG-TERM AND STABLE COOPERATION WITH CUSTOMERS.
TO ESTABLISH LONG-TERM AND STABLE COOPERATION WITH CUSTOMERS.



VALUE SERVICE

Durable quality /
Free samples /
Best service /

CHSEF WILL CONTINUE TO TAKE "ORIENT VALUE FOR CUSTOMER, 200% DEVELOPMENT FOR EMPLOYEE, 50% CONTRIBUTION FOR SOCIETY" AS CORPORATE PHILOSOPHY TO ESTABLISH LONG-TERM AND STABLE COOPERATION WITH CUSTOMERS.
TO ESTABLISH LONG-TERM AND STABLE COOPERATION WITH CUSTOMERS.

QUALITY ASSURANCE

Test report and certification
can be provided

CHSEF WILL CONTINUE TO TAKE "ORIENT VALUE FOR CUSTOMER, 200% DEVELOPMENT FOR EMPLOYEE, 50% CONTRIBUTION FOR SOCIETY" AS CORPORATE PHILOSOPHY TO ESTABLISH LONG-TERM AND STABLE COOPERATION WITH CUSTOMERS.
TO ESTABLISH LONG-TERM AND STABLE COOPERATION WITH CUSTOMERS.





Product

link :

<https://www.amervolt.com/mtch-06125-s-new-6way-120240v-plug-in-type-squared-ch-electrical-load-center-panel-board.html>