
AMCH-06125-F Metro ch series economy 6way power flush mount type distribution board load center parts



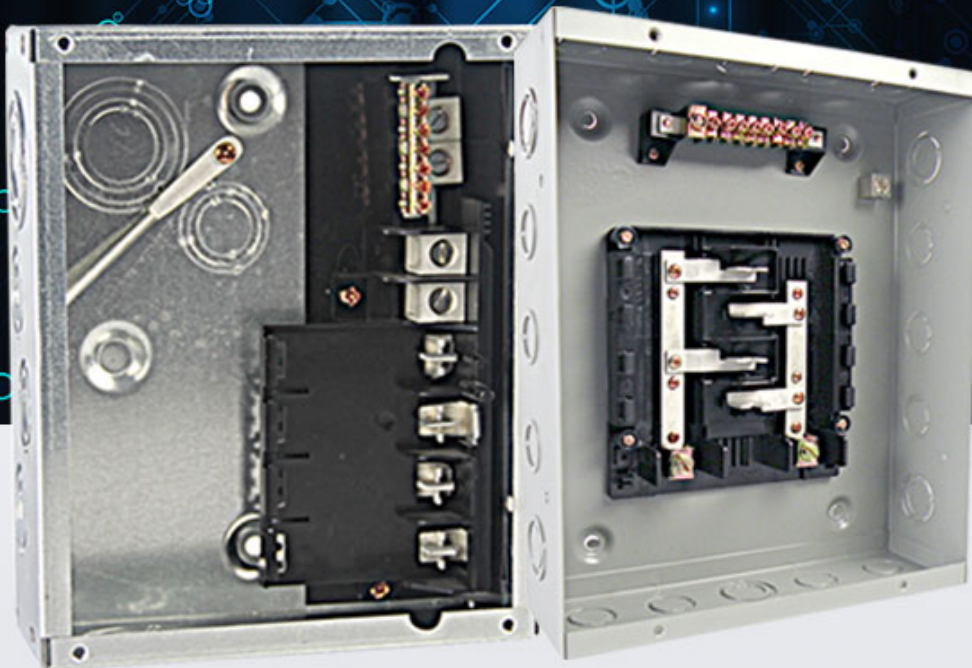
LOAD CENTER

PROFESSIONAL MANUFACTURE

Durable quality

Free samples

Best service



PRODUCT PARAMETERS

Specification	Rated Voltage:120/240V Material:Steel sheet of up to 0.8-1.2 thickness,6way,Flush type
MOQ	200pcs
Price	Depend on steel sheet thickness and inner part

	materials
--	-----------

PRODUCT DETAIL

ADVANTAGES MATERIAL

FLUSH AND SURFACE
MOUNTED DESIGN

CHIEF WILL CONTINUE TO TAKE "CREATE VALUE FOR CUSTOMERS, 200% DEVELOPMENT FOR EMPLOYEES, MAKE CONTRIBUTION FOR SOCIETY" AS CORPORATE PHILOSOPHY TO ESTABLISH LONG-TERM AND STABLE COOPERATION WITH CUSTOMERS.
TO ESTABLISH LONG-TERM AND STABLE COOPERATION WITH CUSTOMERS.



VALUE SERVICE

Durable quality /
Free samples /
Best service /

CHIEF WILL CONTINUE TO TAKE "CREATE VALUE FOR CUSTOMERS, 200% DEVELOPMENT FOR EMPLOYEES, MAKE CONTRIBUTION FOR SOCIETY" AS CORPORATE PHILOSOPHY TO ESTABLISH LONG-TERM AND STABLE COOPERATION WITH CUSTOMERS.
TO ESTABLISH LONG-TERM AND STABLE COOPERATION WITH CUSTOMERS.

QUALITY ASSURANCE

Test report and certification
can be provided

CHIEF WILL CONTINUE TO TAKE "CREATE VALUE FOR CUSTOMERS, 200% DEVELOPMENT FOR EMPLOYEES, MAKE CONTRIBUTION FOR SOCIETY" AS CORPORATE PHILOSOPHY TO ESTABLISH LONG-TERM AND STABLE COOPERATION WITH CUSTOMERS.
TO ESTABLISH LONG-TERM AND STABLE COOPERATION WITH CUSTOMERS.





Product

link :

<https://www.amervolt.com/mtch-06125-f-meto-ch-series-economy-6way-power-flush-mount-type-distribution-board-load-center-parts.html>