
AMCH-02125-F New economic 2 way mini circuit breaker box flush type ch distribution board load center



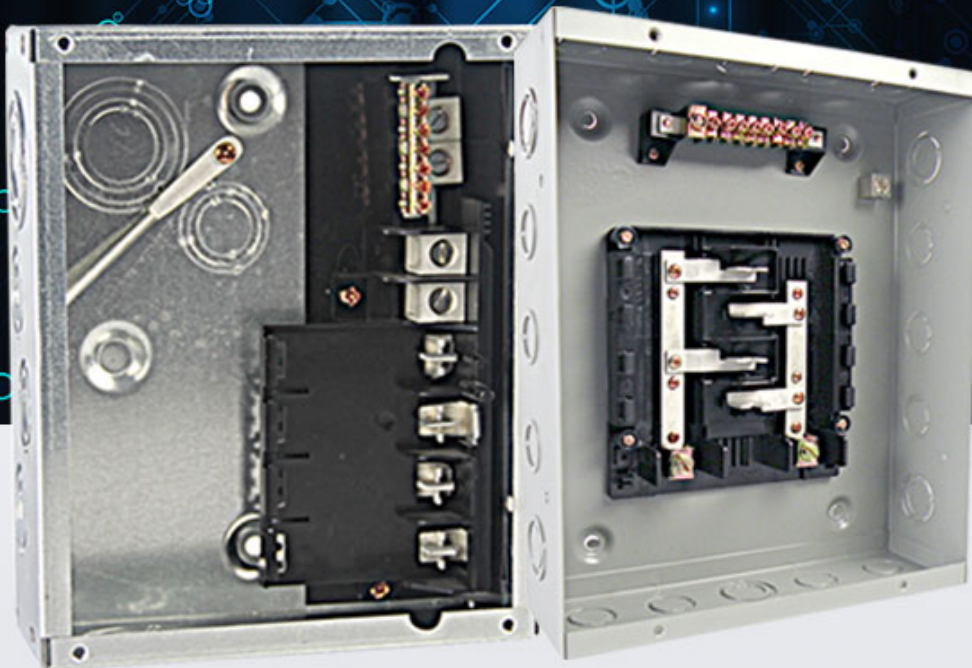
LOAD CENTER

PROFESSIONAL MANUFACTURE

Durable quality

Free samples

Best service



PRODUCT PARAMETERS

Specification	Rated Voltage:120/240V Material:Steel sheet of up to 0.8-1.2 thickness,2way,Flush type
MOQ	200pcs
Price	Depend on steel sheet thickness and inner part

	materials
--	-----------

PRODUCT DETAIL

ADVANTAGES MATERIAL

FLUSH AND SURFACE
MOUNTED DESIGN

CHSEF WILL CONTINUE TO TAKE "CREATE VALUE FOR CUSTOMERS, 200% DEVELOPMENT FOR EMPLOYEES, MAKE CONTRIBUTION FOR SOCIETY" AS CORPORATE PHILOSOPHY TO ESTABLISH LONG-TERM AND STABLE COOPERATION WITH CUSTOMERS.
TO ESTABLISH LONG-TERM AND STABLE COOPERATION WITH CUSTOMERS.



VALUE SERVICE

Durable quality /
Free samples /
Best service /

CHSEF WILL CONTINUE TO TAKE "CREATE VALUE FOR CUSTOMERS, 200% DEVELOPMENT FOR EMPLOYEES, MAKE CONTRIBUTION FOR SOCIETY" AS CORPORATE PHILOSOPHY TO ESTABLISH LONG-TERM AND STABLE COOPERATION WITH CUSTOMERS.
TO ESTABLISH LONG-TERM AND STABLE COOPERATION WITH CUSTOMERS.

QUALITY ASSURANCE

Test report and certification
can be provided

CHSEF WILL CONTINUE TO TAKE "CREATE VALUE FOR CUSTOMERS, 200% DEVELOPMENT FOR EMPLOYEES, MAKE CONTRIBUTION FOR SOCIETY" AS CORPORATE PHILOSOPHY TO ESTABLISH LONG-TERM AND STABLE COOPERATION WITH CUSTOMERS.
TO ESTABLISH LONG-TERM AND STABLE COOPERATION WITH CUSTOMERS.





Click to Contact



Macheal wu



+86-13777725518



zoe@freshoptics.com.cn

Product

link :

<https://www.amervolt.com/mtch-02125-f-new-economic-2-way-mini-circuit-breaker-box-flush-type-ch-distribution-board-load-center.html>